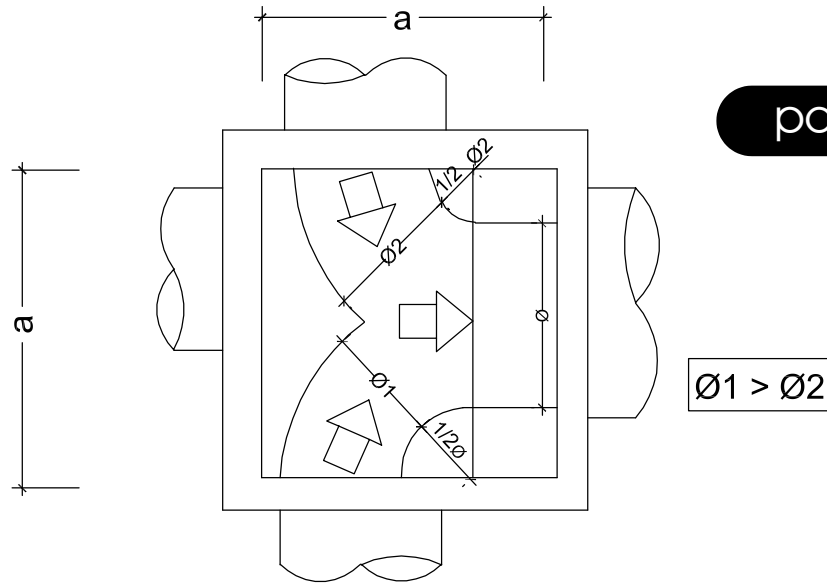


poço-de-visita – dimensionamento

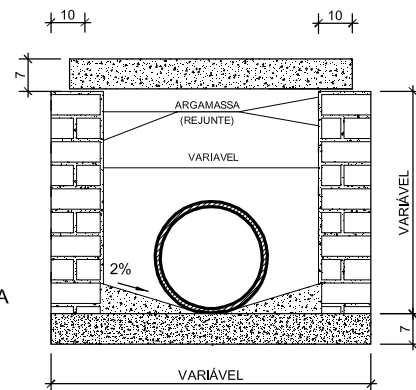
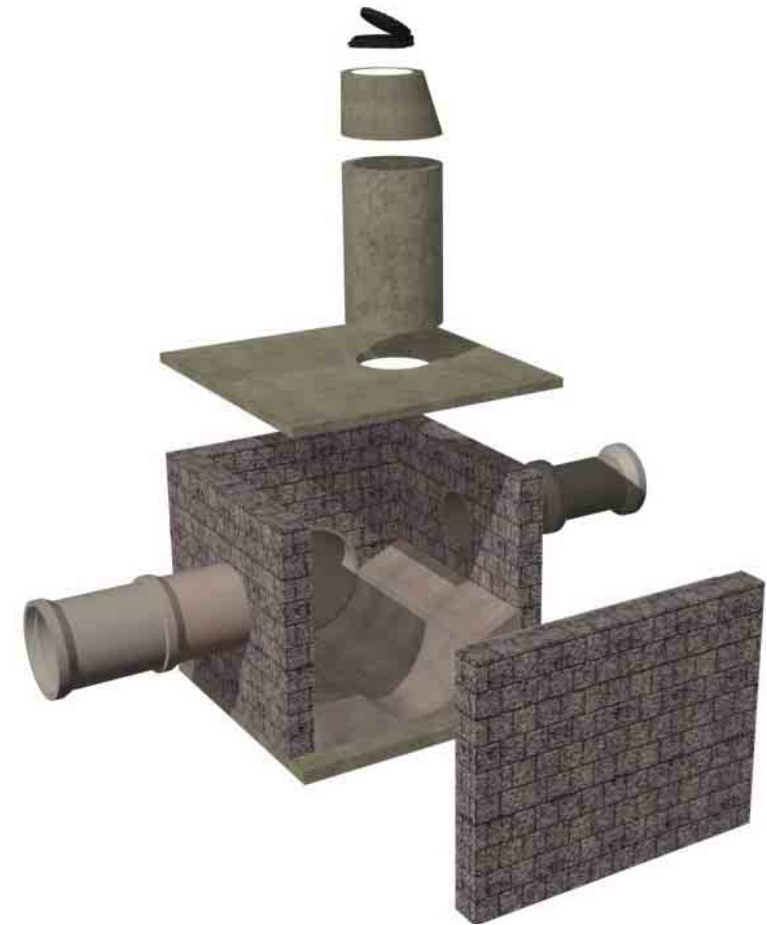
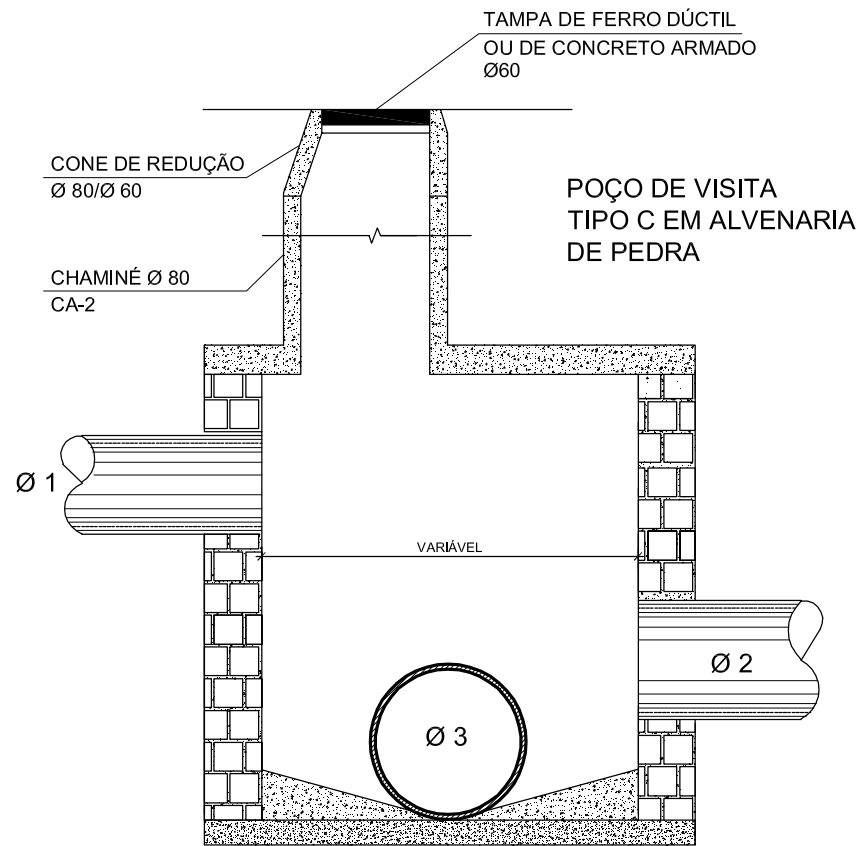


4º CASO

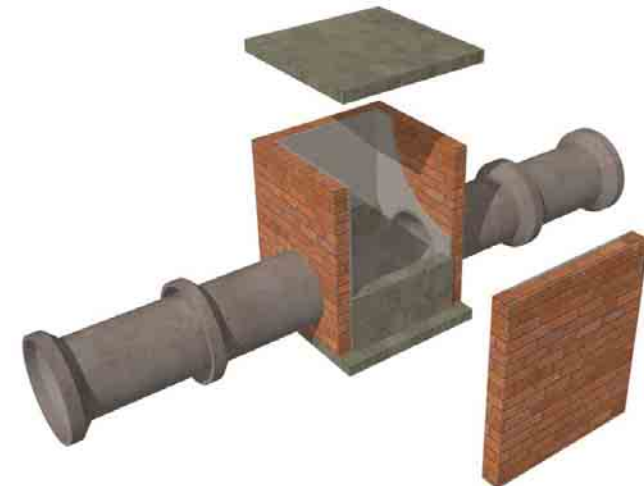
TABELA DEFININDO AS DIMENÇÕES DO PV

$\varnothing \backslash \varnothing_1$	30	40	50	60	80	100	120	150
30	80	-	-	-	-	-	-	-
40	80	80	-	-	-	-	-	-
50	80	100	100	-	-	-	-	-
60	100	100	100	150	-	-	-	-
80	100	150	150	150	160	-	-	-
100	150	150	150	160	180	200	-	-
120	200	200	200	200	200	220	240	-
150	220	220	220	220	240	250	270	300

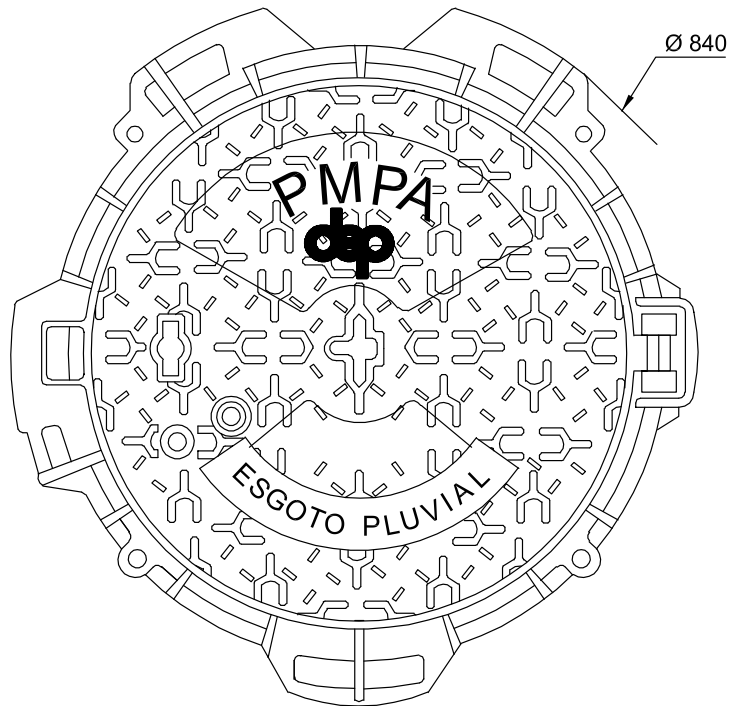
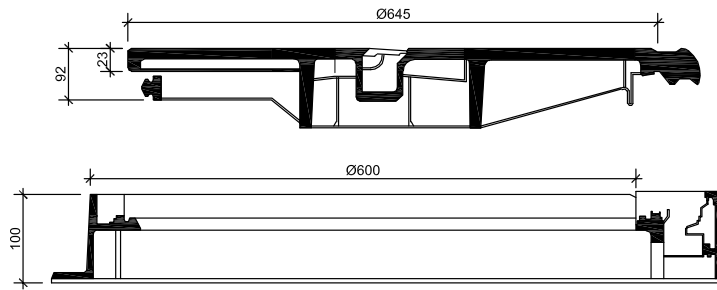




POÇO DE VISITA
TIPOS A e B
NO PASSEIO



tampão de PV em ferro dúctil

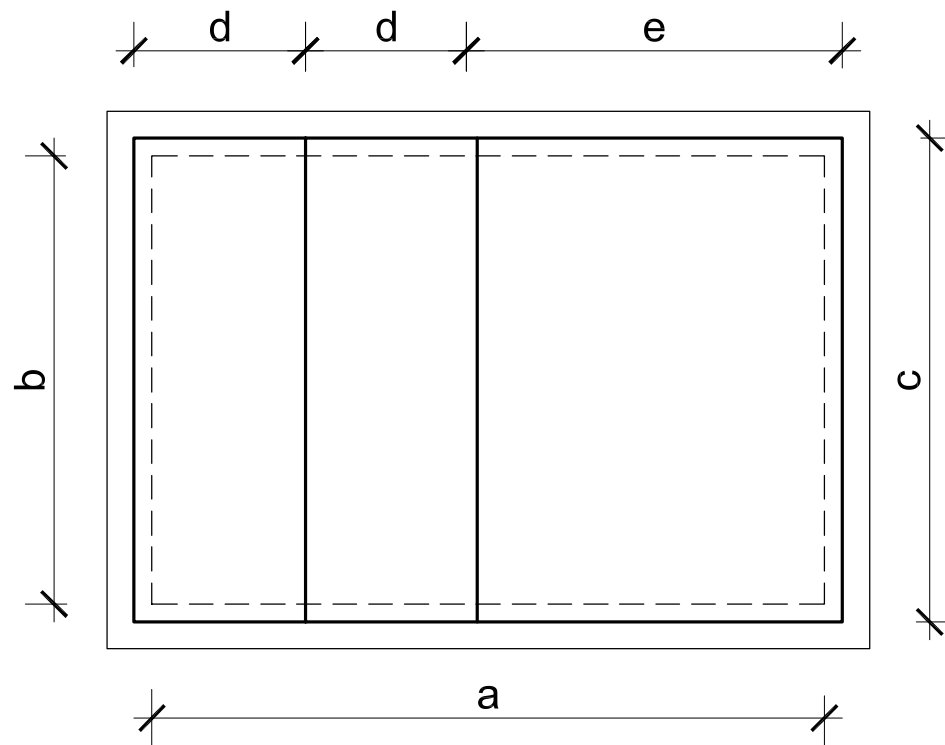
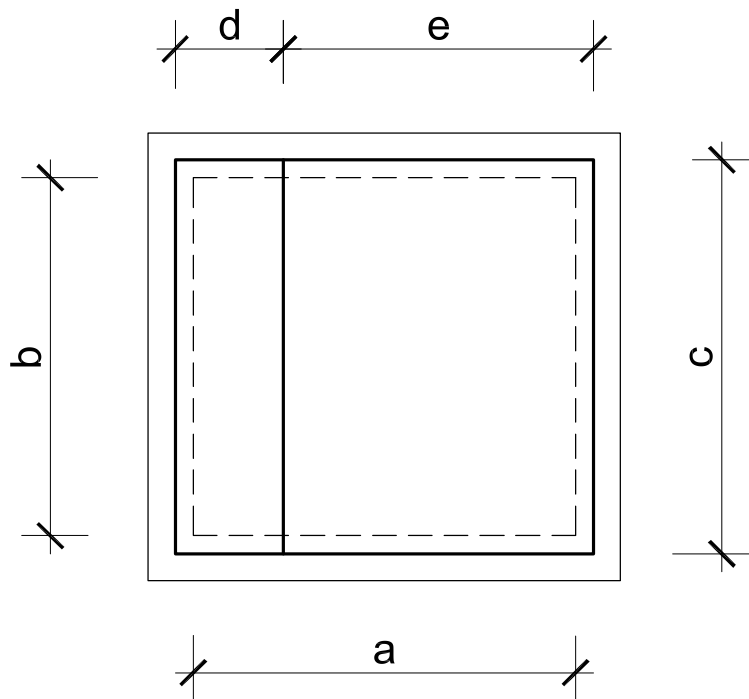


DIMENSÕES EM mm

MODELO	Diâmetro do telar	Altura do telar	Diâmetro livre da abertura
DN 600	840	100	600



poço-de-visita – medidas internas



DIMENSÕES INTERNAS PV			DIMENSÕES DAS LAJES		
Ø	a	b	c	d	e
30	80	80	100	30	70
40	80	80	100	30	70
50	100	100	120	50	70
60	100	100	120	50	70
80	100	100	120	50	70

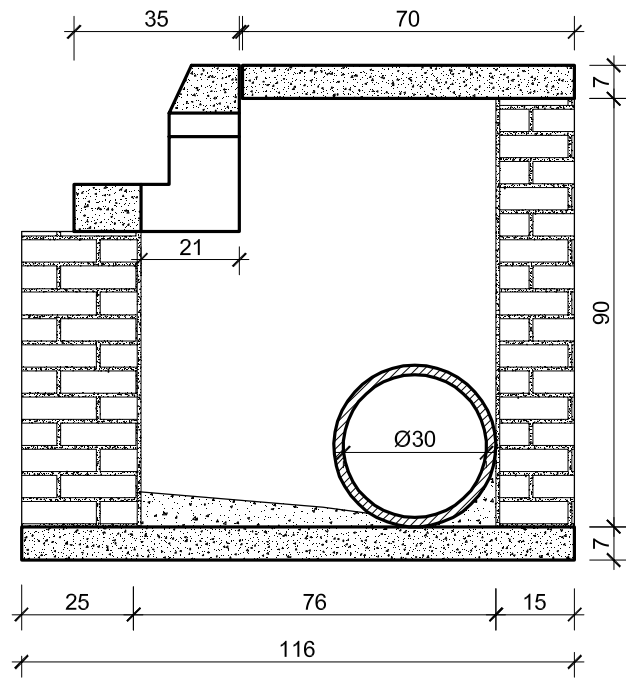
OBS: dimensões em cm

DIMENSÕES INTERNAS PV			DIMENSÕES DAS LAJES		
Ø	a	b	c	d	e
100	100	200	120	70	70
120	100	200	120	70	70
150	100	200	120	70	70

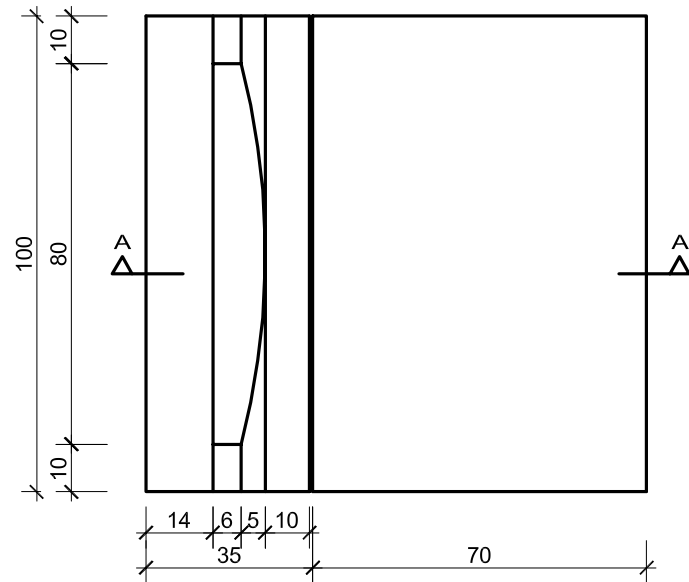
OBS: dimensões em cm



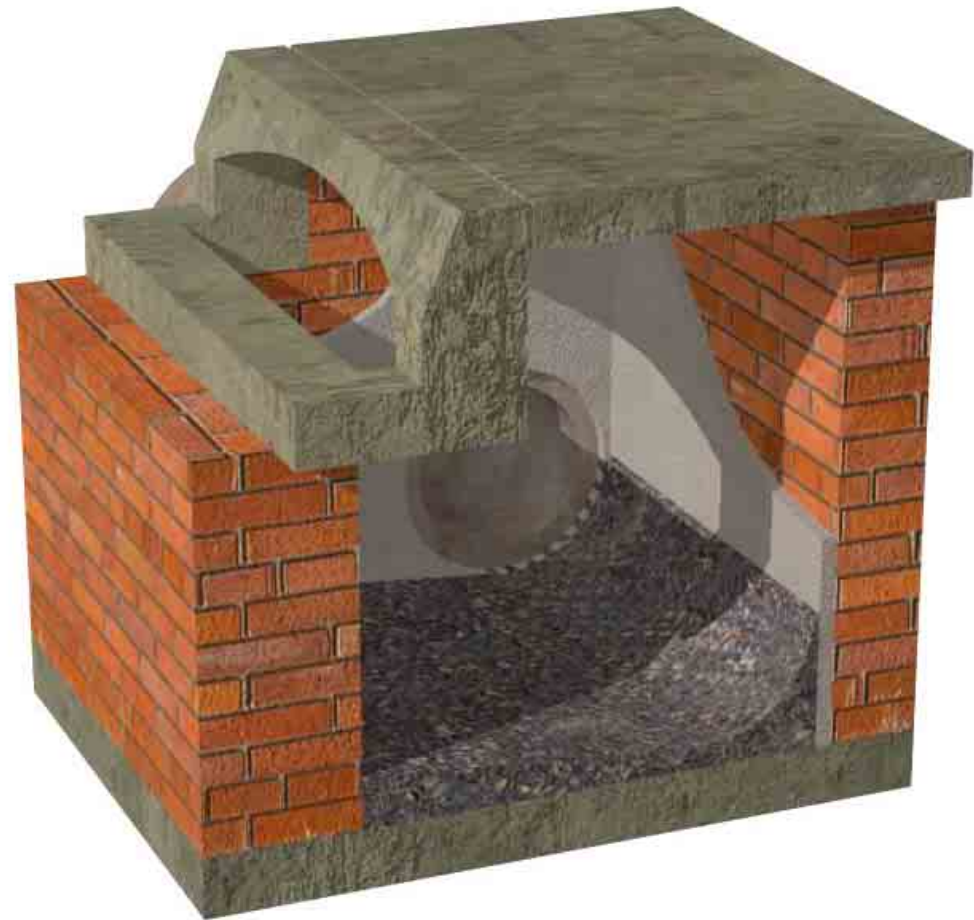
boca-de-lobo – execução



CORTE A-A



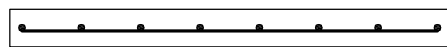
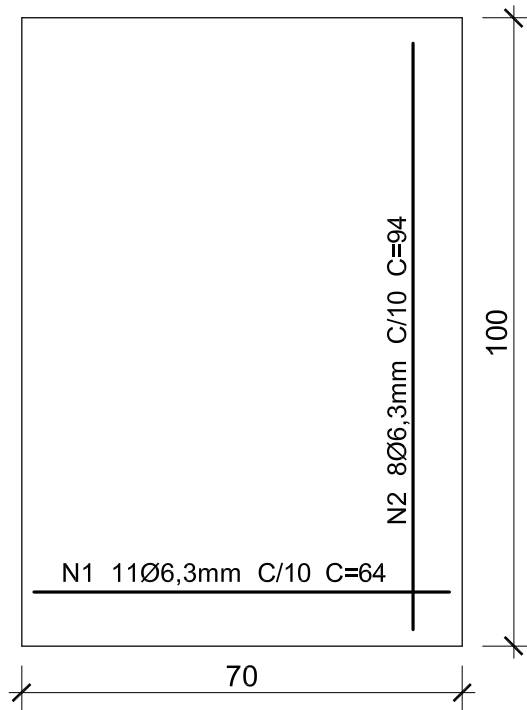
VISTA SUPERIOR



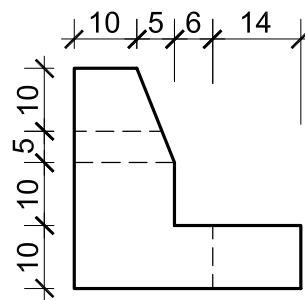
boca-de-lobo – espelho e tampa

anexo
5.20

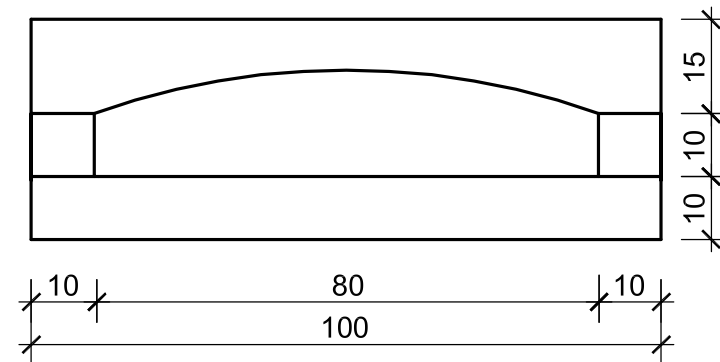
anexos



dimensões em cm



VISTA LATERAL



Cotas em m

VISTA FRONTAL DO ESPELHO