

ARRANHA-CÉU HÍBRIDO

4º Distrito - Porto Alegre - RS - Brasil
Arq. Luis Henrique Bueno Villanova
Orientador: Arq. Daniel Pitta



Localização



- VOLUNTÁRIOS DA PÁTRIA
- FARRAPOS
- RUA ERNESTO ALVES
- RUA GARIBALDI

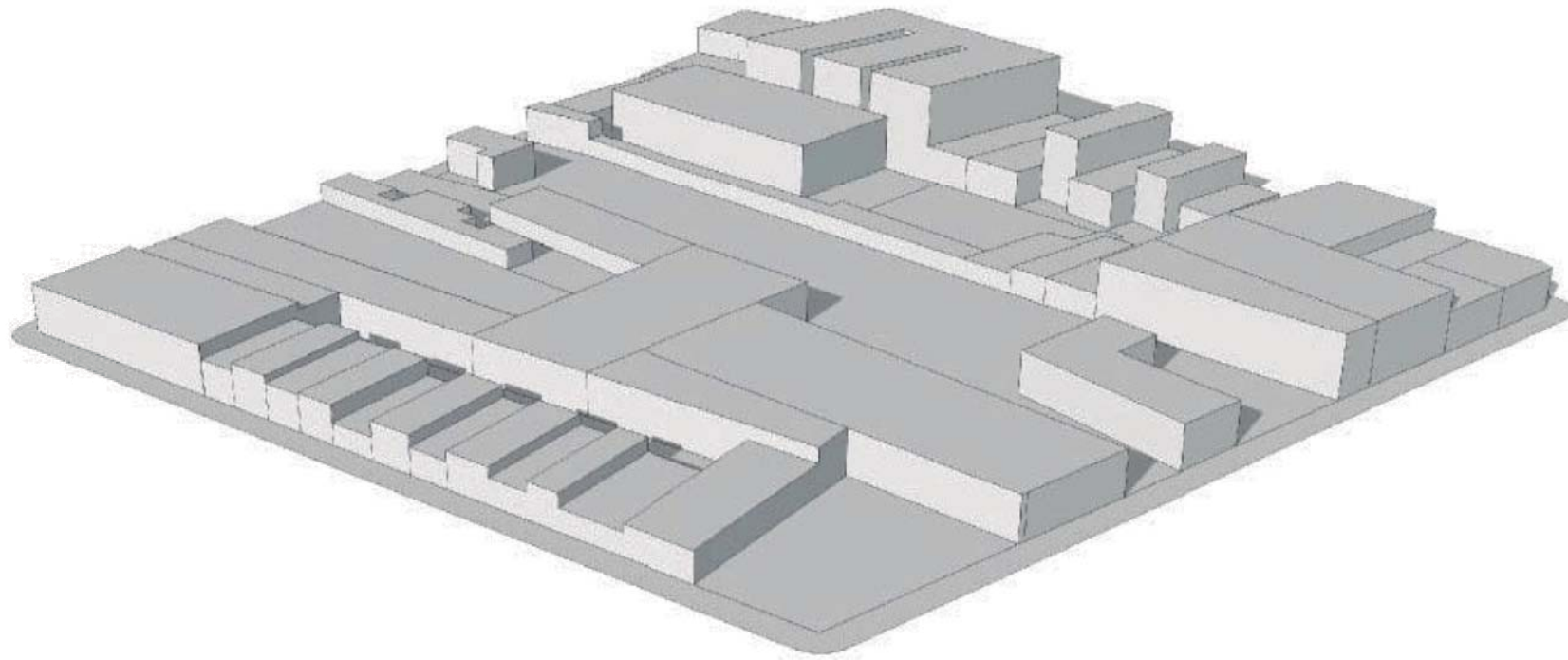
Levantamento



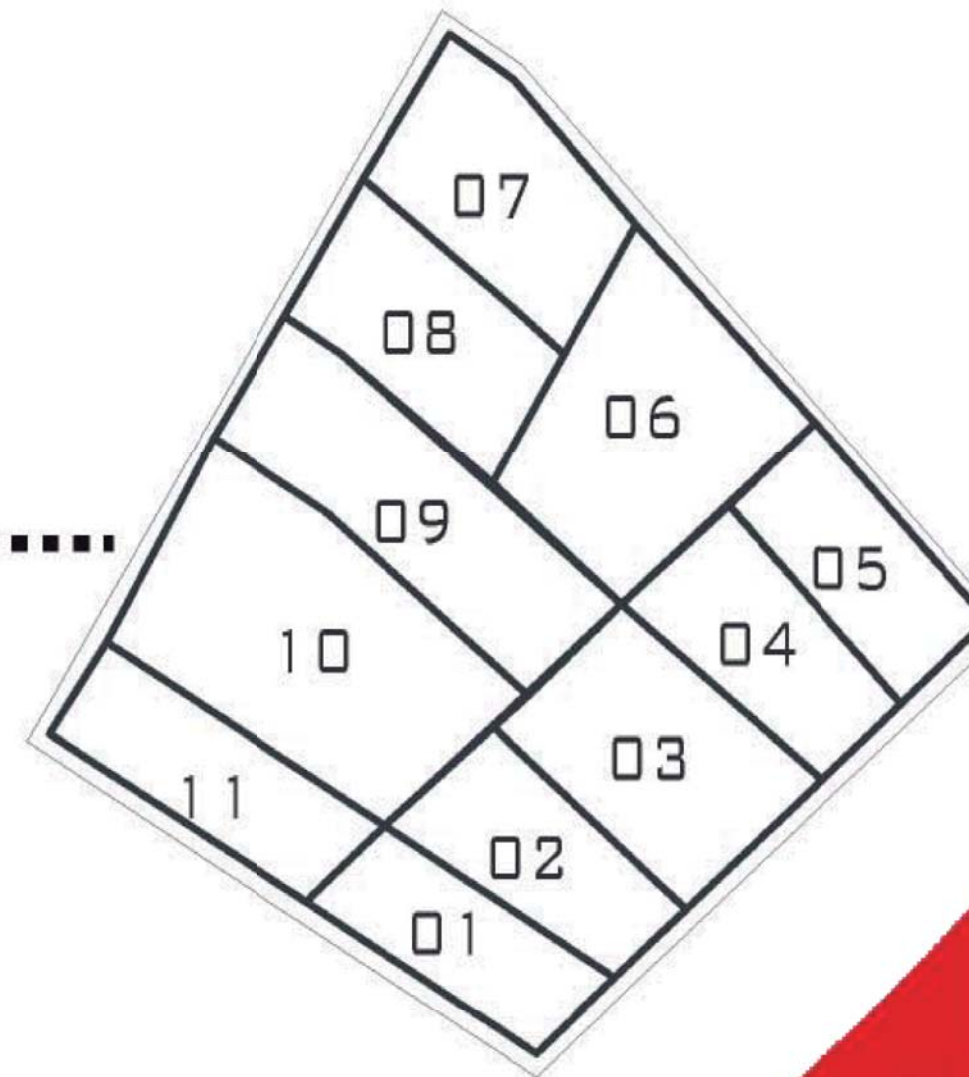
- COMÉRCIO/SERVIÇO
- RESIDENCIAL
- MISTO
- ABANDONADO
- POSTO DE GASOLINA
- IGREJA



Diagrama

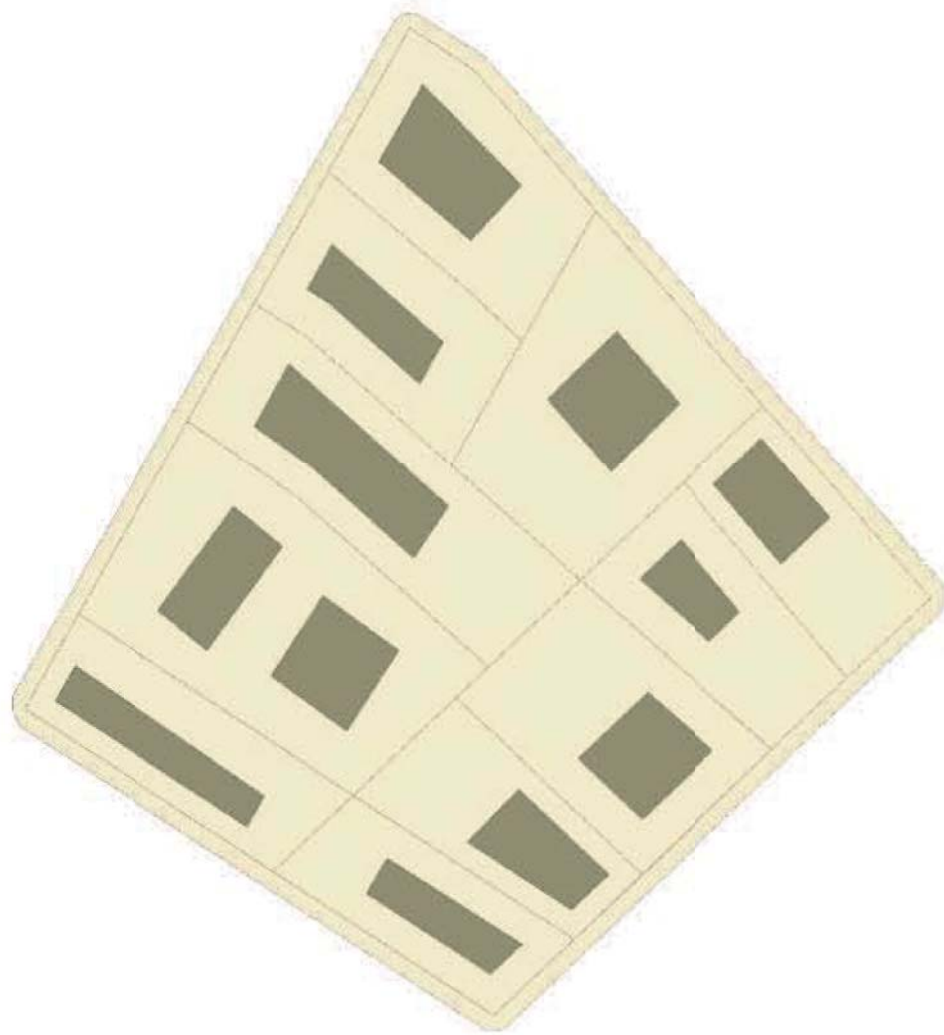


Situação Atual

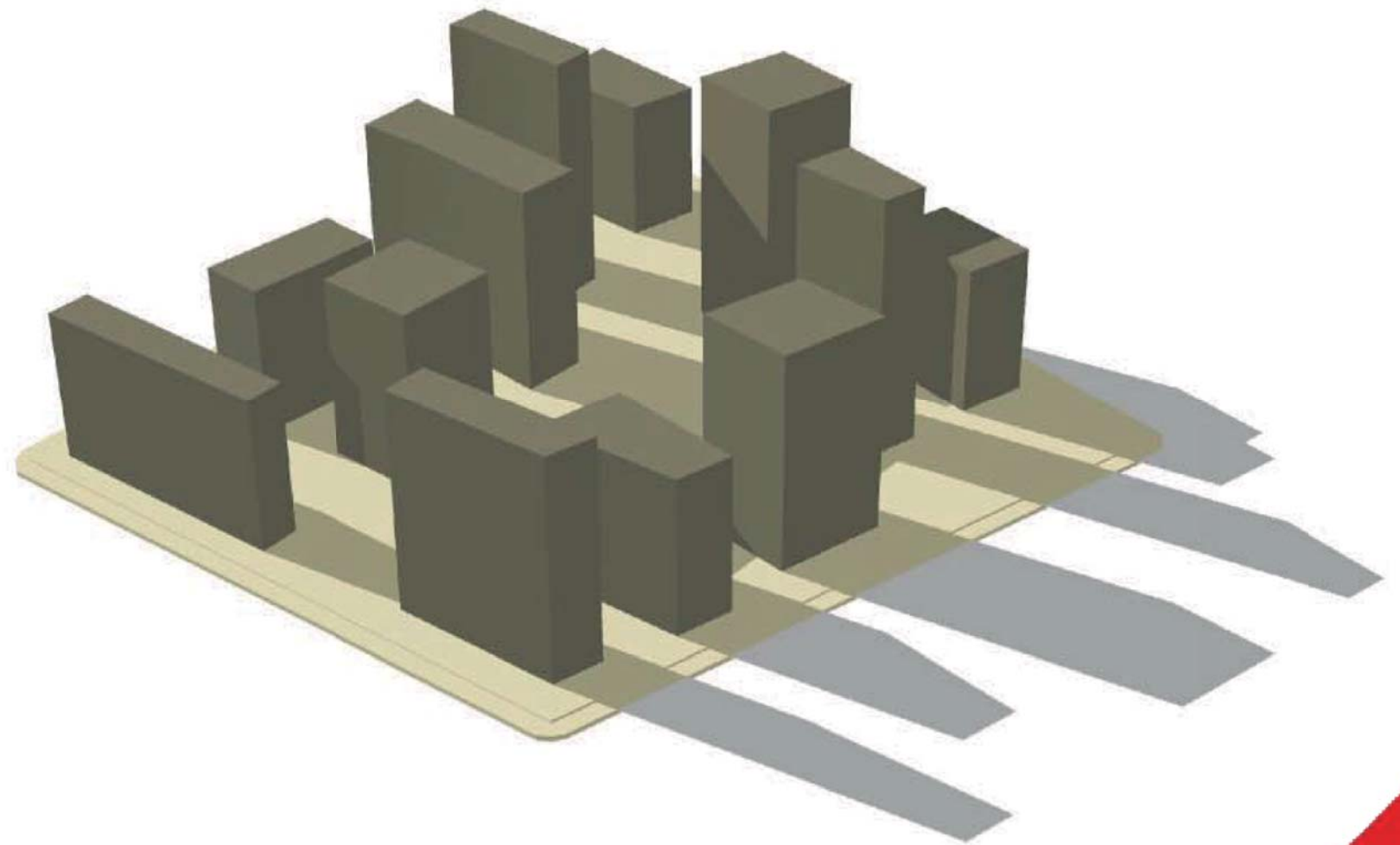
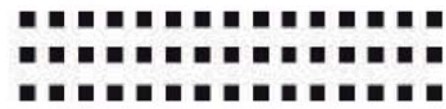


Divisão em Lotes

Diagrama



Aplicação do PDDUA



Quadra Convencional

Diagrama

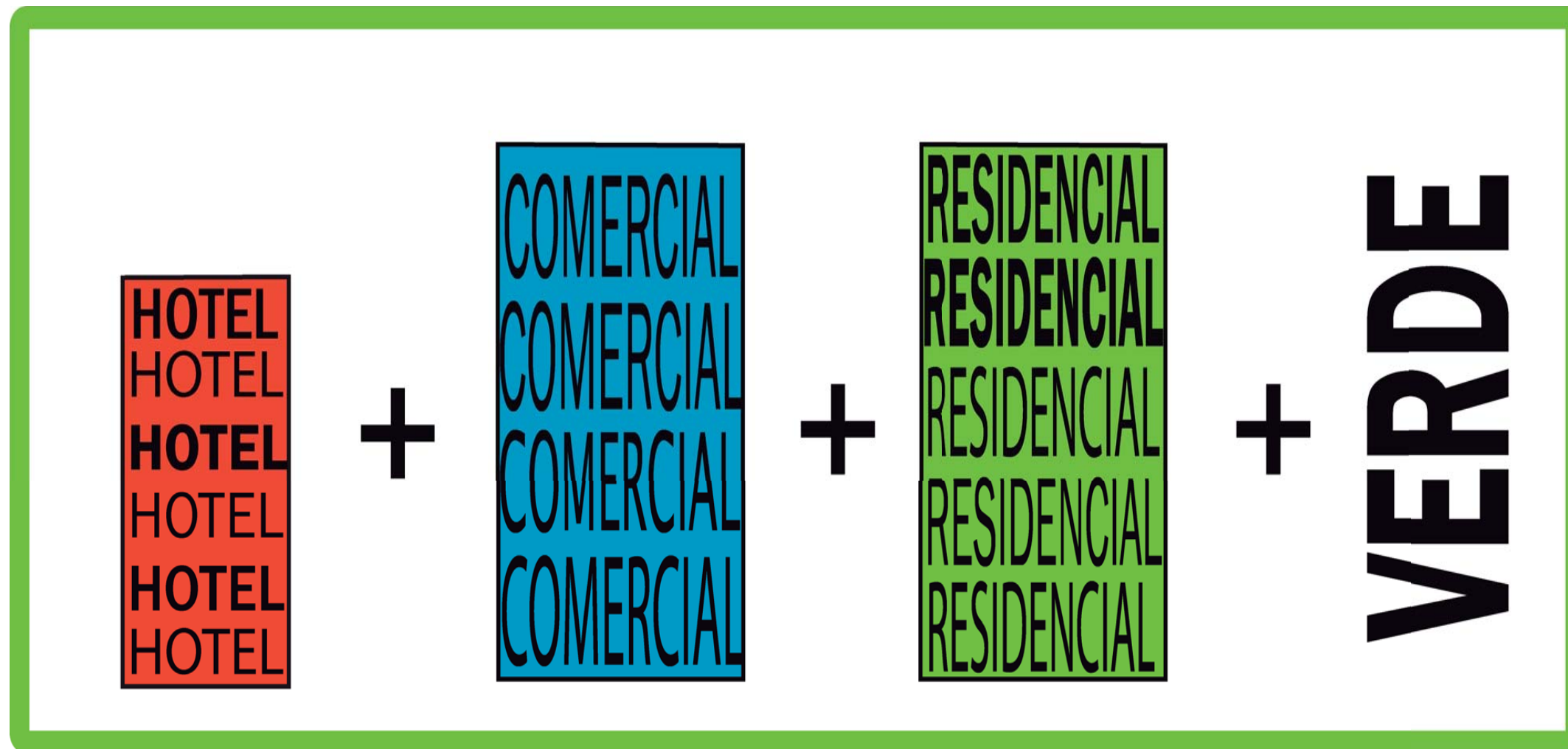


Usos

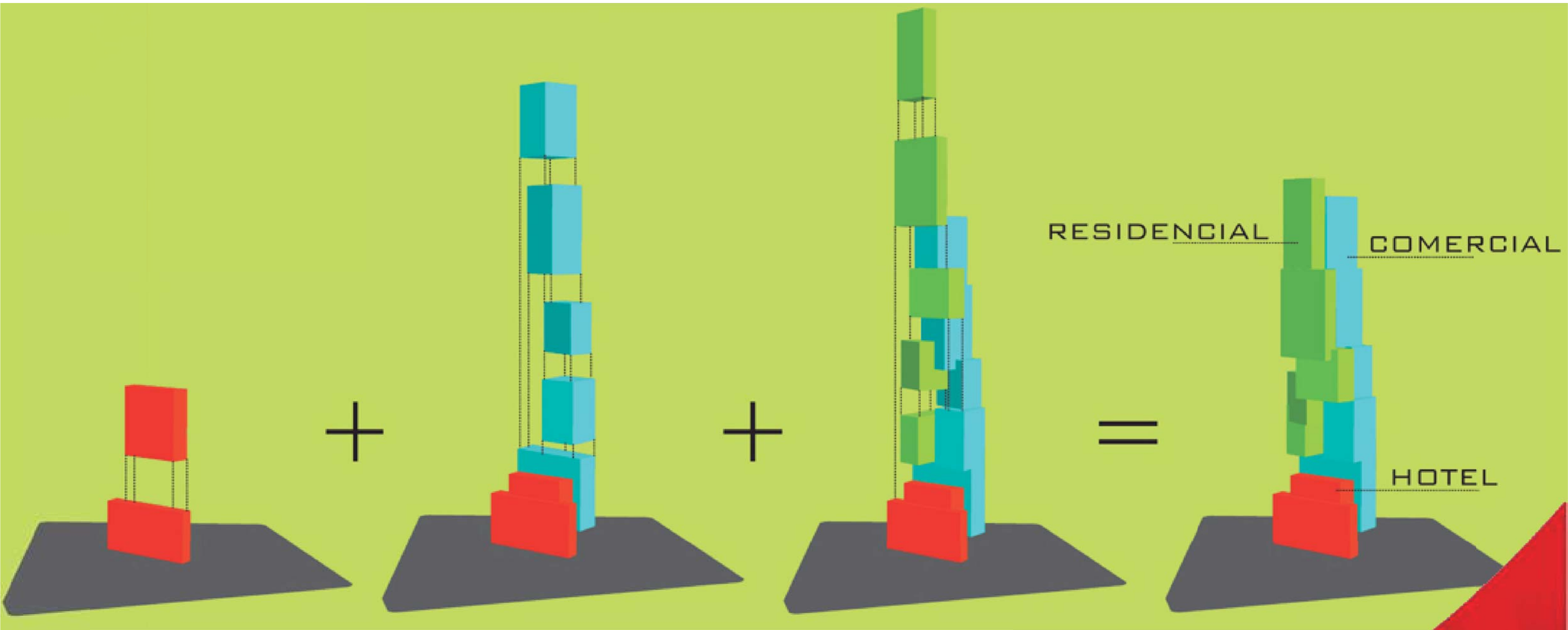


Tipologias

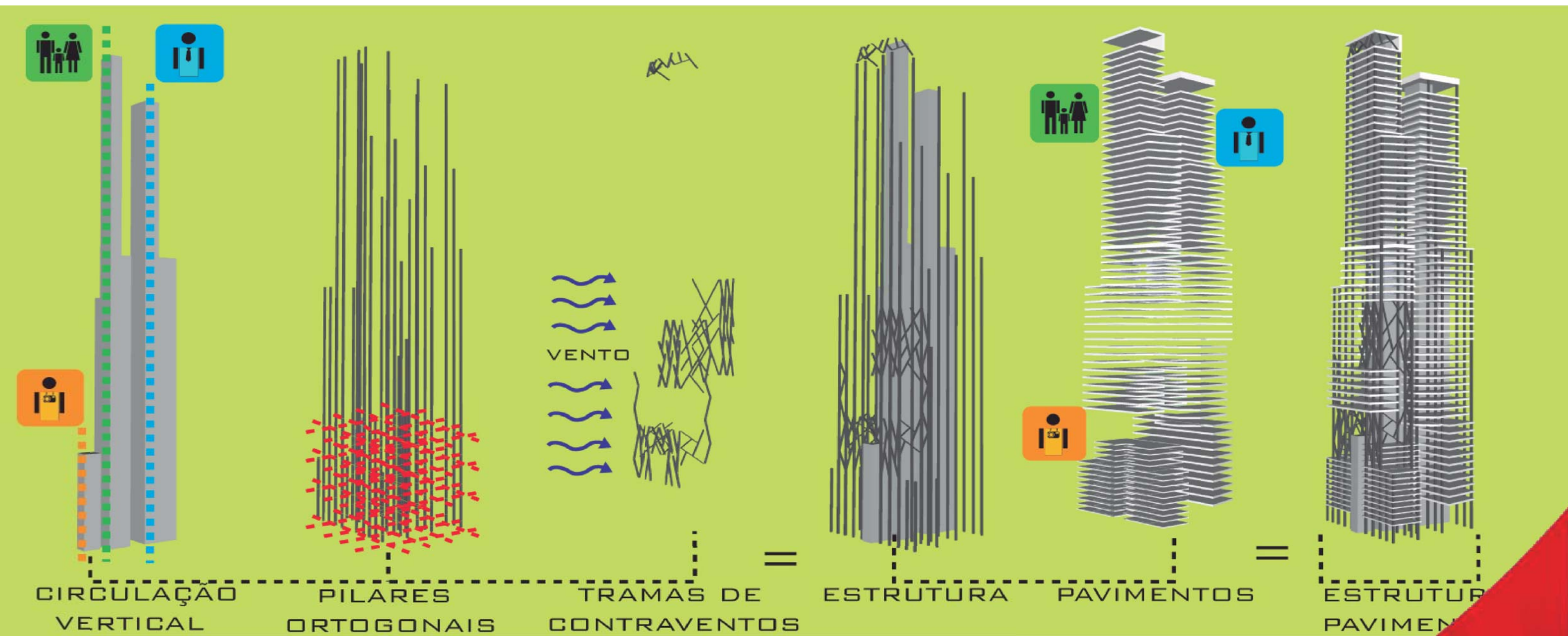
Conceito Híbrido



Criação da Forma

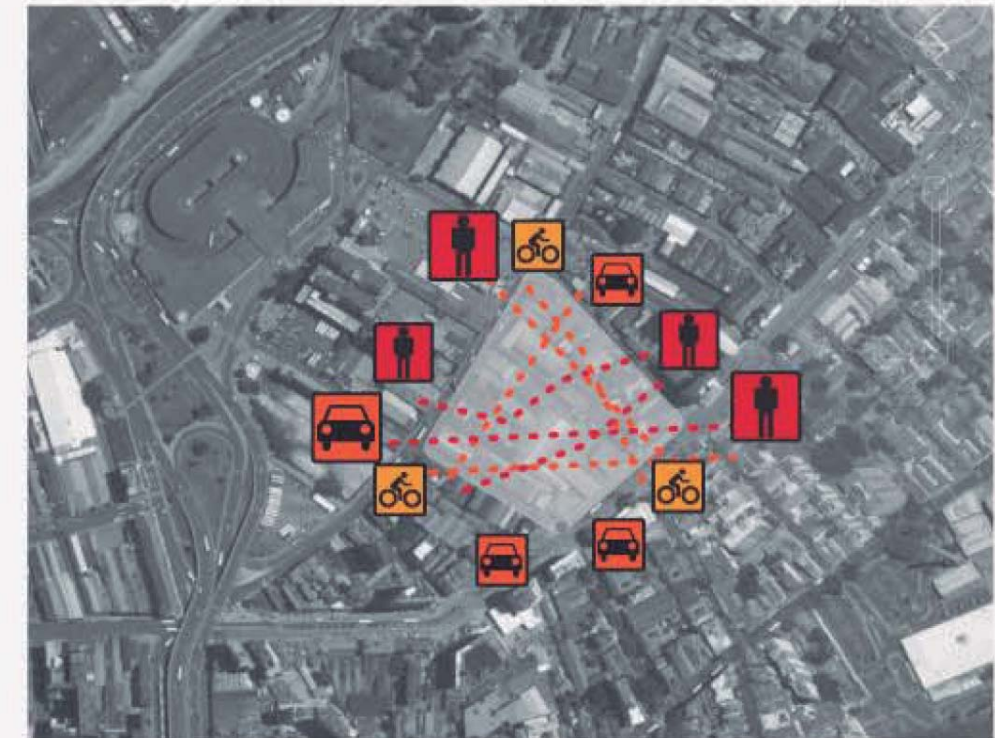
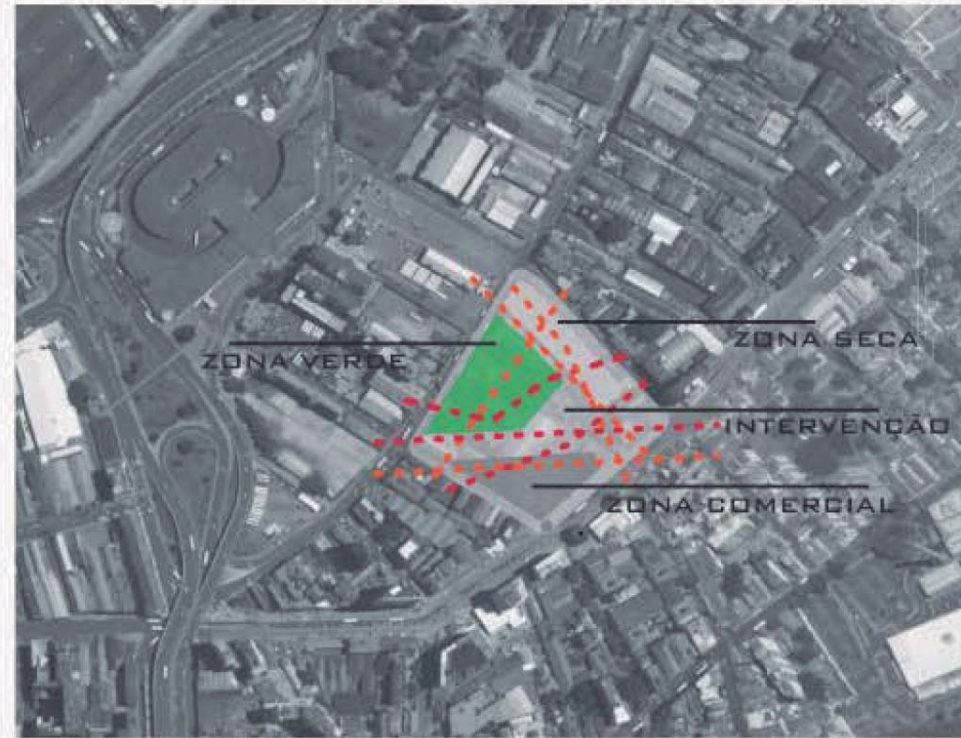
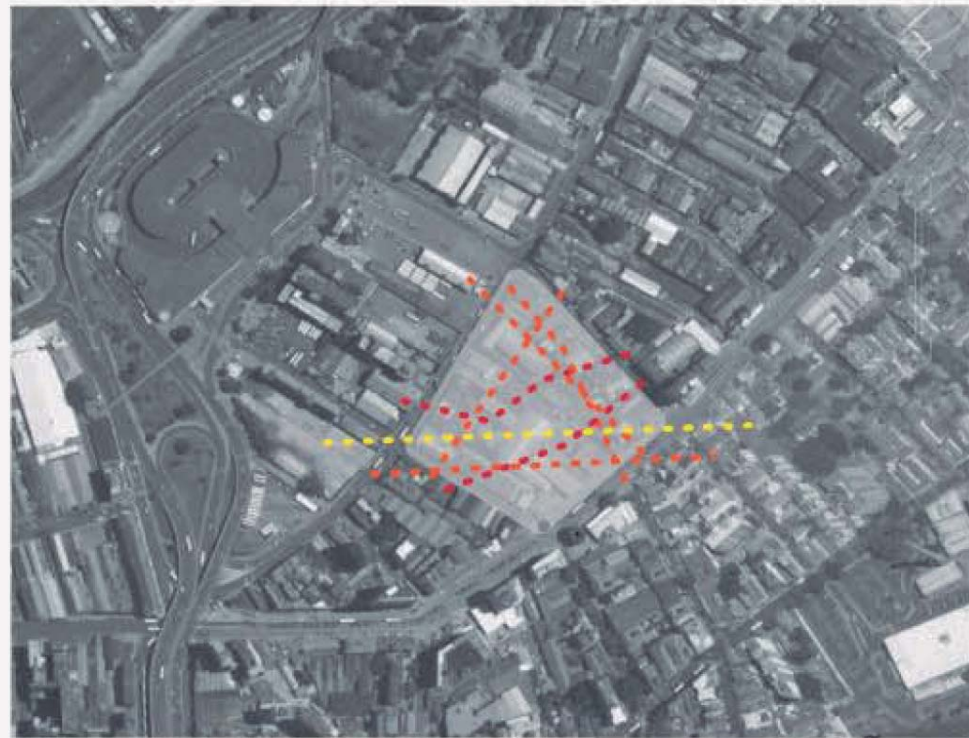


Estruturas





Conexões



Planta Baixa Térreo











UniRitter
Laureate International Universities







COMO SERÁ O FUTURO??

www.comoseraofuturo.com.br



ARRANHA-CÉU HÍBRIDO

4º Distrito - Porto Alegre - RS - Brasil

Arq. Luis Henrique Bueno Villanova

Orientador: Arq. Daniel Pitta

Banca: Arq. Júlio Collares;

Arq. Marta Peixoto; Arq. Sérgio Marques

Consultores: Arq. Eng. Alberto Adomilli;

Arq. Eduardo Saavedra; Arq. Paula Motta